



Investigate the food that Aborigines ate at the time of the arrival of Europeans. Write a dentist's /description for the Governor on the state of an aboriginal family's teeth.
The nature of contact between Aboriginal people and/or Torres Strait Islanders and others, for example, the Macassans and the Europeans, and the effects of these interactions on, for example families and the environment (ACHHK080)

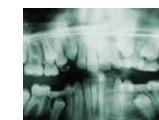


History

Use the design process to make a tooth fairy bag from a piece of fabric that they have designed (with a tooth theme). Create a placemat from a piece of their tooth fabric.
Design and produce a piece of fabric that could be used as a household mat or other useful item, e.g. a bag for a specific purpose.



Technologies



Science

Compare the different teeth (tusks, fangs) of animals and how these are an adaption to their environment.
Living things, including plants and animals, depend on each other and the environment to survive (ACSSU073)

Include teeth (and the skeleton) in the discussion/brainstorm of how forces operate.

Forces can be exerted by one object on another through direct contact or from a distance (ACSSU076)

Keep track of the baby and permanent teeth as they change: graph against student/month. (Table downloadable at www.bonesandjoints.com.au).
It would be fun for students to keep a photographic record of their teeth and create a timeline.

Survey school for favourite toothpaste and who use electric/manual toothbrush.
Survey (hands up perhaps) as to who cleaned their teeth before coming school.
Present to assembly

Investigate and use the properties of odd and even numbers (ACMNA071)
Select and trial methods for data collection, including survey questions and recording sheets (ACMSP095)

Mathematics



Year 4 Teeth



The Arts

Using the character created during the English task, experiment with line to create the tooth and various emotions. (This work could form the basis of their fabric).

Creating Visual Arts: Elements of art: Line



English

Invent a tooth character and give it a name e.g. Mickey Molar, Fiona Filling, Countess Canine. Write a narrative about this character.
Understand how texts are made cohesive through the use of linking devices including pronoun reference and text connectives (ACELA1491)
Recognise how quotation marks are used in texts to signal dialogue, titles and reported speech (ACELA1492)
Create literary texts that explore students' own experiences and imagining (ACELT1607)



Health and physical education

Discuss the reasons for a mouthguard.
What to do if your teeth and/or jaw are damaged during activity

Ways to keep healthier and safer
• situations that can be identified as being risky



Languages

Using the information from the Health and Physical Education activity, create a cartoon of the first aid.

Viewing, Reading and Responding



Geography

No activities provided.