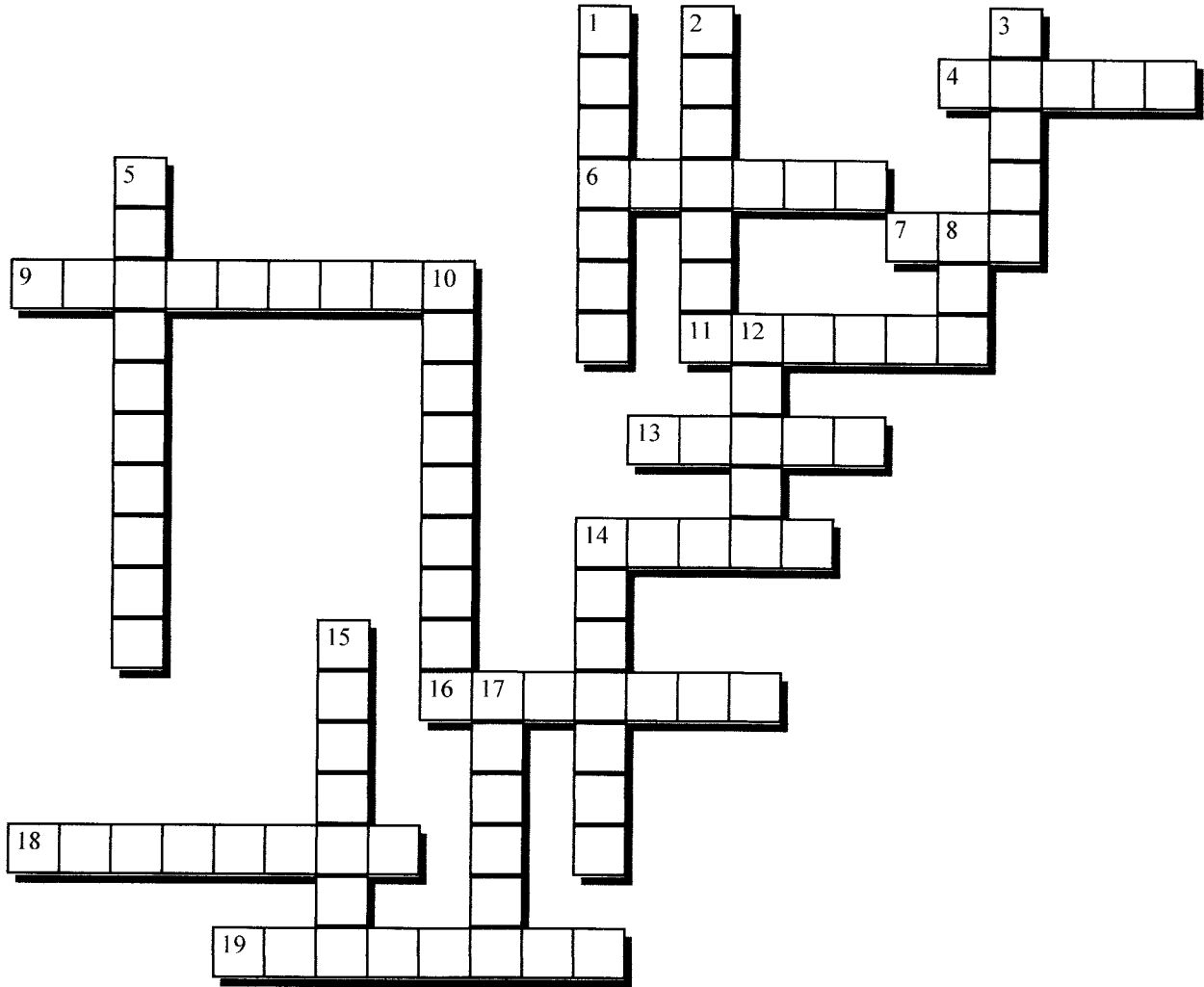


Years 6-8 Skeleton Revision Sheet 1

Test your knowledge of the Skeleton. Instructions: Fill in each answer by using the clues below.



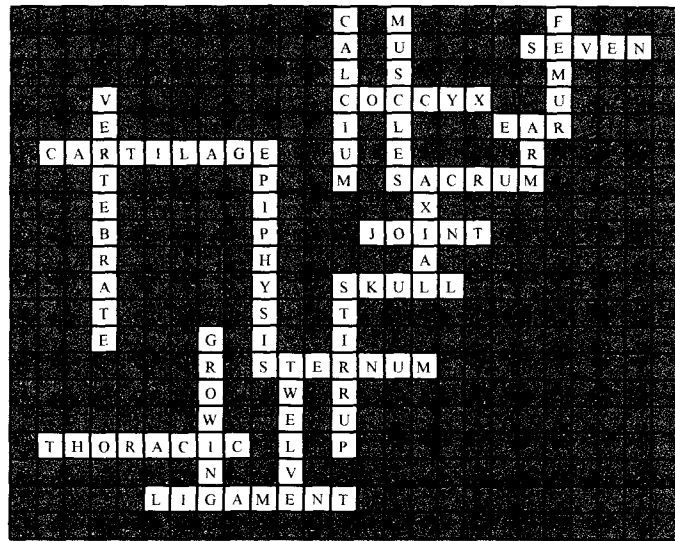
Across Clues

- 4) the number of cervical (neck) vertebrae in the human body (5)
- 6) a small, triangular bone found at the base of the spine in humans (6)
- 7) where the smallest bone in the body is located (3)
- 9) a tough, fibrous connective tissue found in various parts of the body, eg joints (9)
- 11) part of the vertebral column that is directly connected with or forms a part of the pelvis (and in humans consists of five fused vertebrae) (6)
- 13) where two or more bones meet to allow or movement (5)
- 14) an example of a flat bone; also protects the brain (5)
- 16) another name for 'breast bone' (7)
- 18) the middle section of the spine where the ribs attach (8)
- 19) a band of tough, fibrous tissue joining bones, cartilages at a joint or supporting an organ (8)

Down Clues

- 1) _____ phosphate and stretchy collagen are the two main component of bone (7)
- 2) the main tissues responsible for movement of a joint (7)
- 3) the largest bone in the human body (5)
- 5) animal having a bony or cartilaginous skeleton (10)
- 8) a part of the appendicular skeleton (3)
- 10) the rounded end of a long bone that is initially separated from the main bone by a layer of cartilage but later (after growth takes place) becomes united/ossified (9)
- 12) forms the central axis of the body; includes skull, vertebrae, ribs (5)
- 14) the smallest bone in the human body; found in the ear (7)
- 15) these pains thought to affect the muscles and usually felt at night, affect children from ages 8-10 (7)
- 17) the number of pairs of ribs in the human body (6)

Years 6-8 Skeleton Revision Sheet 1 Solution



ACROSS:

4. SEVEN 6. COCCYX 7. EAR
9. CARTILAGE 11. SACRUM 13. JOINT
14. SKULL 16. STERNUM 18. THORACIC
19. LIGAMENT

DOWN:

1. CALCIUM 2. MUSCLES 3. FEMUR
5. VERTEBRATE 8. ARM 10. EPIPHYSIS
12. AXIAL 14. STIRRUP 15. GROWING
17. TWELVE